



**Hirosaki University  
Overview  
2018**

# IDEALS AND PRINCIPLES • FUNDAMENTAL GOALS

## Ideals and Principles

Hirosaki University has, in the spirit of the Fundamental Law of Education, established the following institutional goals: 1) to incorporate extensive bodies of knowledge into our campus culture; 2) to engage in the teaching of and research in a broad range of specialized scholarly fields; 3) to educate persons of character and integrity who can contribute to human culture.

## Fundamental Goals: The Hirosaki University Vision of the Future

Hirosaki University, in its role as one of the comprehensive public universities in the north of Japan, has set as its foundation a commitment to serve as a core actor for regional revitalization. Taking this commitment into consideration, we established four strategic areas of concentration, renewable energy, the environment, radiation emergency medicine, and food, positioning them as objectives in the second medium-term plan. We have subsequently integrated these strategic and related themes into our research and educational programs. We have also made great headway in establishing ties with local organizations and governmental bodies. Moreover, as we enter the third round of medium-term objectives, we will continue to contribute to local society through human resource development and the fostering of innovation.

Hirosaki University has recently implemented a university-wide reorganization. We have 1) strengthened human resource development programs in the fields of science, technology and agriculture that contribute to

innovation, 2) made qualitative improvements in the teacher training program for elementary school teachers, and 3) built up both the educational and research arms of the graduate schools. Moreover, among our third medium-term objectives, we will continually review the themes and reevaluate and reform the system by which research is implemented in the original four core areas of concentration. Furthermore, although we have independently implemented university governance reforms through wide-ranging on-campus discussion and debate, we must continue to verify and reexamine these outcomes. We must do so in order to enhance the functioning of and to implement the reforms instituted under the management system that was introduced after the establishment of the national university corporation system. Ultimately, our mission is to live up to our slogan of "communicating to the world; creating with our community"

## Education • Research Organization

With the successful completion of the above-mentioned reorganization of the educational and research system, we must now turn to meet the challenges of globalization, low birthrates and an aging society as well as the need for innovation creation, challenges not only to Hirosaki University and the surrounding region, but to the nation as a whole. Moreover, in the face of recent scientific and technological advances, there has been a shift towards an emphasis on post-graduate education, which has inevitably come to serve as the linchpin of higher education. We are therefore reexamining our postgraduate educational and research programs, while remaining conscious of the continuity that must exist between undergraduate and postgraduate study.

## Educational Reform

Hirosaki University, in its role as a core actor in the regional revitalization process, has a major responsibility to train future local leaders who can address and resolve regional issues from a truly global perspective. However, in order to take advantage of the specialized knowledge and technological know-how of our faculty and other researchers, we must first cultivate the basic knowledge and cultural understanding that serve as the foundation of advanced study. In this sense, the role of liberal arts education in the formation of harmonious human relations is critical. Moreover, in order to best navigate the educational reform we find ourselves a part of, we must reinforce our educational infrastructure, make improvements in the way we select students for admission, tighten performance evaluation, strengthen active learning programs, promote learning that is designed by students themselves, and strengthen the student support system.

## Promotion of Research

We consider the promotion of basic research, research that is recognized internationally as well as research that contributes to regional revitalization to be essential elements of our mission as a university. With this in mind, we offer support to young researchers, promote international research exchange, and encourage the securing of competitive research funds and the creation and utilization of intellectual property.

In addition, we will continue to promote research in the areas we have designated as strategic areas of concentration: renewable energy, the environment, radiation emergency medicine, and food.

## Regional Cooperation and Regional Contribution

To fulfill our role as a core actor in the regional revitalization process, we will continue to strengthen our ties with local governments, companies and citizens groups. With respect to education, we are incorporating regional issues into our curriculum through active-learning and other pedagogical approaches that encourage students to think about and offer solutions to local and regional issues. As far as research is concerned, we are contributing to innovation creation through joint research projects with the local community. In addition, we are cooperating with other institutions of higher learning in the region, and are actively involved in joint educational and research activities that contribute to regional revitalization.

## Globalization

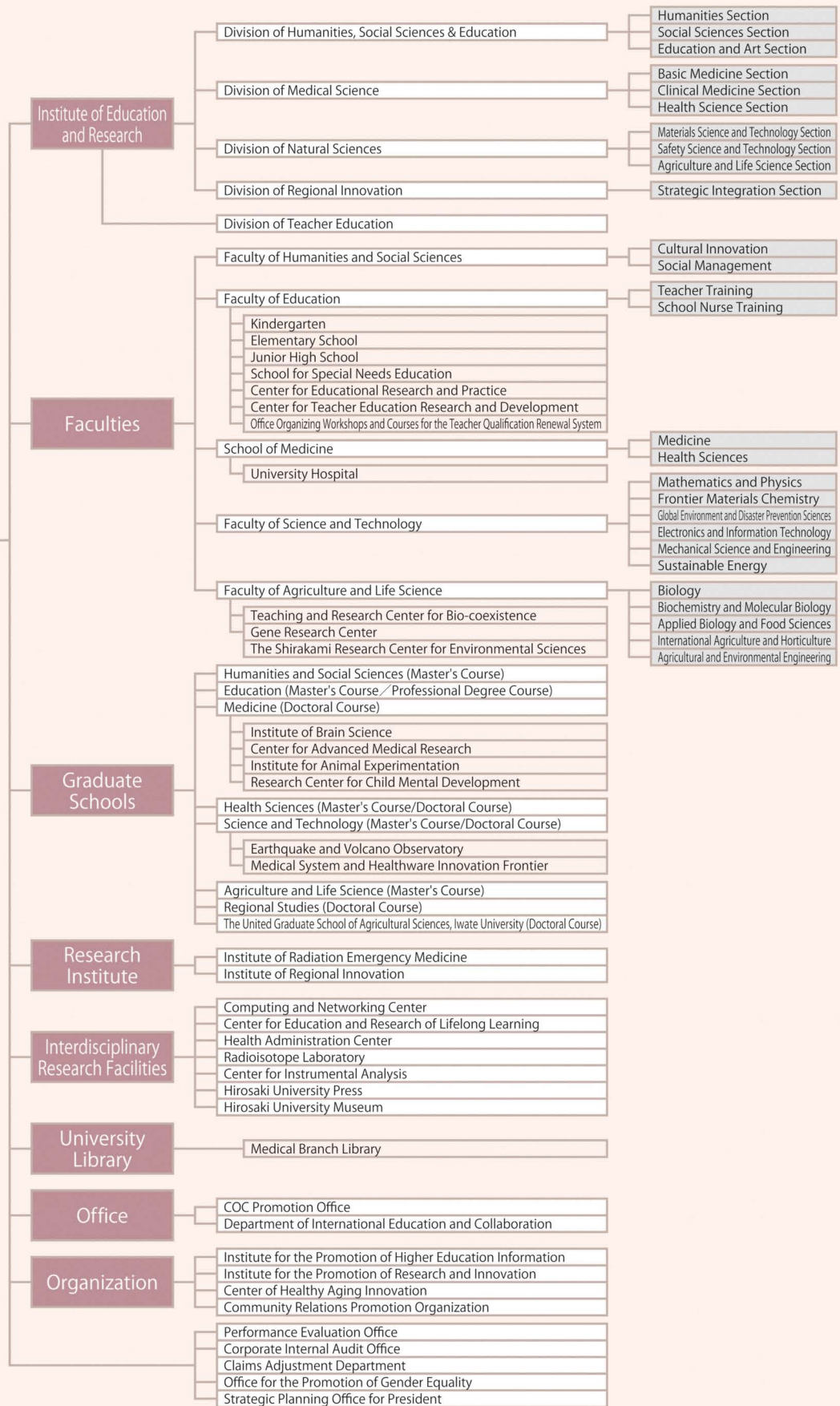
International academic exchange and the fostering of a global perspective has become an important issue for local communities as well as for the nation as a whole. Therefore, we here at Hirosaki University recognize the need to accelerate our own globalization. In addition to the general strengthening of education and research programs, we are working to enhance the internationalization and diversity of our campus as well as to offer support to students who wish to gain overseas experience.

## Management

In order to resolve outstanding issues and realize our institutional goals, we will continue to seek university-wide consensus under the leadership of the president. Moreover, given the challenges facing national university corporations throughout the country, we must continue to constantly review and reevaluate our management practices and foster a common awareness and sense of unity amongst the members of our university community.

# ACADEMIC ORGANIZATION

## Hirosaki University





## Hirosaki University Logo

Concept: The university's logo takes cherry blossoms, for which Hirosaki City has great pride, as its motif. Blossoms representing each of five faculties are gathered together into one large blooming flower, facing the future. The circle in the center of the logo stands for the Earth, and expresses how graduates of Hirosaki University will make outstanding contributions to business and research, helping to make the world go round. In addition, the five different colors represent the different faculties: red for Medicine, orange for Education, green for Agriculture & Life Sciences, blue for Science & Technology, and purple for Humanities and Social Sciences. The image of the flowers scattered around the Earth like satellites also carries the meaning of Hirosaki University becoming a beacon for the region. Taken as a whole, the logo was designed to have a colorful, modern feel, brimming with freshness, vigor, and the energy of an enjoyable campus life.

Established July 24, 2006

## President, Executive Director, Auditor

As of May 1, 2018

President		Executive Director and Vice President		Auditor		Assistant to the President		Vice Executive Director		Total		Sum Total
M	F	M	F	M	F	M	F	M	F	M	F	
1		6	1	1	1(★1)	4(★3)		3(★1)		15(★4)	2(★1)	17(★5)

Note: Part-time positions are shown in ★ and are included in the total number

Note: For Vice Presidents, Assistants to the President, and Vice Executive Directors, numbers include cases where one person holds more than one position

Divisions	Professors		Associate Professors		Lecturers		Assistant Professors		Research Associates		Teachers of Attached School		Subtotal		Other Staff		Subtotal		Total
	M	F	M	F	M	F	M	F	M	F	M	F	M	F	M	F	M	F	
Total Number of Present Employees	197	26	161	30	92	29	156	56	33	22	47	50	686	213	354	705	1,040	918	1,958
Administration Bureau															112	49	112	49	161
Faculty of Humanities and Social Sciences	22	8	24	6	10	2							56	16	4	4	60	20	80
Faculty of Education	33	7	19	5	15	8				1	47	50	114	71	11	4	125	75	200
Graduate School of Medicine	40		26	2	20		59	20	10	7			155	29	11	8	166	37	203
Graduate School of Health Sciences	19	9	7	7	14	7	13	11	2	3			55	37	7	1	62	38	100
University Hospital			8	1	26	7	50	18	20	11			104	37	156	613	260	650	910
Graduate School of Science and Technology	42	1	36	2	3		15	2	1				97	5	15	8	112	13	125
Faculty of Agriculture and Life Science	27	1	31	3			13	2					71	6	17	5	88	11	99
Graduate School of Regional Studies	2		2										4	0			4	0	4
Institute of Radiation Emergency Medicine	3						3						6	0	3		9	0	9
Institute of Regional Innovation	6		5					1					11	1	4		15	1	16
Center for Education and Research of Lifelong Learning					1								1	0			1	0	1
Health Administration Center	1			1		1							1	2		2	1	4	5
Radioisotope Laboratory													0	0		1	0	1	1
University Library													0	0	7	8	7	8	15
Department of International Education and Collaboration			2	2				1					2	3	4	2	6	5	11
Institute for the Promotion of Higher Education Innovation	1		1	1	2	2	2						6	3			6	3	9
Center of Healthy Aging Innovation	1				1	2							2	2			2	2	4
COC Promotion Office							1						1	0	3		4	0	4
Office for the Promotion of Gender Equality								1					0	1			0	1	1

Note: Numbers for staff working in the Corporate Internal Audit Office and COC Promotion Office, Department of International Education and Collaboration, Strategic Planning Office for President are included in the numbers for the Administration Bureau.

# Undergraduates

As of May 1, 2018

Faculties	Departments and Courses	Annual Admission Capacity	Second Year Transfer Student	Third Year Transfer Student	Enrollment Capacity	Actual Enrollment																				
						Freshmen			Sophomores			Juniors			Seniors			5th year			6th year			Total		
						Sub total	M	F	Sub total	M	F	Sub total	M	F	Sub total	M	F	Sub total	M	F	Sub total	M	F	Total	M	F
Humanities and Social Sciences	Cultural Innovation	110			330	114	36	78	113	40	73	106	45	61										333	121	212
	Social Management	155			465	160	93	67	158	97	61	164	96	68										482	286	196
	Subtotal	265			795	274	129	145	271	137	134	270	141	129										815	407	408
Humanities	Humanities and Cultural Studies				115										130	61	69							130	61	69
	Social Science and Social System Studies				110										136	64	72							136	64	72
	Economics and Commercial Sciences				120										147	110	37							147	110	37
	Subtotal				345										413	235	178							413	235	178
Education	Teacher Training Division	150			595	153	65	88	157	77	80	153	80	73	161	86	75							624	308	316
	School Nurse Training Division	20			85	20		20	20		20	21		21	27		27							88		88
	Community Education Training Division				70										84	35	49							84	35	49
	Subtotal	170			750	173	65	108	177	77	100	174	80	94	272	121	151							796	343	453
Medicine	Medicine	112	20		767	115	60	55	159	87	72	152	99	53	113	71	42	124	83	41	118	76	42	781	476	305
	Health Sciences	200		30	860	204	66	138	203	68	135	203	65	138	208	68	140							818	267	551
	Subtotal	312	20	30	1,627	319	126	193	362	155	207	355	164	191	321	139	182	124	83	41	118	76	42	1,599	743	856
Science and Technology	Mathematics and Physics	78		2	236	82	73	9	78	70	8	80	66	14										240	209	31
	Frontier Materials Chemistry	52		1	203	53	43	10	51	37	14	52	41	11	50	41	9							206	162	44
	Global Environment and Disaster Prevention Sciences	65		2	197	67	43	24	66	49	17	67	51	16										200	143	57
	Electronics and Information Technology	55		2	225	59	50	9	59	57	2	57	51	6	63	59	4							238	217	21
	Mechanical Science and Engineering	80		2	242	81	75	6	82	73	9	80	76	4										243	224	19
	Sustainable Energy	30		1	91	33	28	5	30	25	5	32	24	8										95	77	18
	Mathematical Sciences				40										42	41	1							42	41	1
	Advanced Physics				40										44	41	3							44	41	3
	Earth and Environmental Sciences				58										63	38	25							63	38	25
	Intelligent Machines and System Engineering				58										63	57	6							63	57	6
	Common Faculty				10										5	3	2							5	3	2
Subtotal	360		10	1,400	375	312	63	366	311	55	368	309	59	330	280	50								1,439	1,212	227
Agriculture and Life Science	Biology	40			160	40	29	11	40	26	14	39	30	9	49	31	18							168	116	52
	Biochemistry and Molecular Biology	40			160	42	26	16	41	25	16	40	21	19	49	30	19							172	102	70
	Applied Biology and Food Sciences	55			165	55	28	27	56	31	25	55	28	27										166	87	79
	International Agriculture and Horticulture	50			150	51	27	24	51	22	29	51	21	30										153	70	83
	Agricultural and Environmental Engineering	30			120	33	26	7	31	26	5	30	25	5	29	19	10							123	96	27
	Applied Bioscience				35										41	27	14							41	27	14
	Agriculture and Horticulture				40										45	25	20							45	25	20
	Subtotal	215			830	221	136	85	219	130	89	215	125	90	213	132	81								868	523
<b>Total</b>	<b>1,322</b>	<b>20</b>	<b>40</b>	<b>5,747</b>	<b>1,362</b>	<b>768</b>	<b>594</b>	<b>1,395</b>	<b>810</b>	<b>585</b>	<b>1,382</b>	<b>819</b>	<b>563</b>	<b>1,549</b>	<b>907</b>	<b>642</b>	<b>124</b>	<b>83</b>	<b>41</b>	<b>118</b>	<b>76</b>	<b>42</b>	<b>5,930</b>	<b>3,463</b>	<b>2,467</b>	

HIROSAKI UNIVERSITY LOGO / NUMBER OF UNIVERSITY STAFF / NUMBER OF STUDENTS

## Graduate Schools

As of May 1, 2018

Classification			Annual Admission Capacity	Enrollment Capacity	Actual Enrollment																	
					Freshmen			Sophomores			Juniors			Seniors			Total					
					Sub total	M	F	Sub total	M	F	Sub total	M	F	Sub total	M	F	Total	M	F			
Humanities and Social Sciences	Master's Course	Cultural Studies	10	20	13	7	6	19	5	14							32	12	20			
		Applied Social Sciences	6	12	9	1	8	7	2	5							16	3	13			
		Subtotal	16	32	22	8	14	26	7	19							48	15	33			
Education	Master's Course	School Education	16	32	19	6	13	25	6	19							44	12	32			
		Curriculum Studies						8	2	6							8	2	6			
		Coordinated School Health (Yogo) Education						2	0	2							2	0	2			
		Subtotal	16	32	19	6	13	35	8	27							54	14	40			
	Professional Degree Course	Professional Development of Teachers	16	32	13	8	5	18	11	7							31	19	12			
Medicine	Doctoral Course	Medical Science	60	230	42	33	9	58	37	21	65	47	18	79	49	30	244	168	78			
Health Sciences	Master's Course	Health Sciences	30	60	32	22	10	42	24	18							74	46	28			
	Doctoral Course	Health Sciences	12	36	14	10	4	10	4	6	21	9	12				45	23	22			
Science and Technology	Master's Course	Science and Technology	120	240	102	87	15	106	94	12							208	181	27			
		Advanced Materials Science and Technology	6	18	4	3	1	2	2	0	5	3	2				11	8	3			
	Doctoral Course	Safety Science and Technology	6	18	10	7	3	6	5	1	4	4	0				20	16	4			
		Subtotal	12	36	14	10	4	8	7	1	9	7	2				31	24	7			
Agriculture and Life Science	Master's Course	Agriculture and Life Sciences	60	120	50	29	21	56	36	20							106	65	41			
Regional Studies	Doctoral Course	Regional Studies	6	18	7	5	2	9	4	5	25	20	5				41	29	12			
Total			348	836	315	218	97	368	232	136	120	83	37	79	49	30	882	582	300			

## The United Graduate School of Agricultural Sciences, Iwate University (Doctoral Course)

The current figure indicates the number of students who belong to Hirosaki University (supervising educators). As of May 1, 2018

Classification			Annual Admission Capacity	Enrollment Capacity	Actual Enrollment																	
					Freshmen			Sophomores			Juniors			Seniors			Total					
					Sub total	M	F	Sub total	M	F	Sub total	M	F	Sub total	M	F	Total	M	F			
The United Graduate School of Agricultural Sciences, Iwate University (Doctoral Course)			24	112	9	7	2	5	4	1	13	8	5				27	19	8			

## Attached School (Faculty of Education)

As of May 1, 2018

Classification		Enrollment Capacity	Classes	Actual Enrollment								
				1st Year	2nd Year	3rd Year	4th Year	5th Year	6th Year	Total		
Kindergarten		90	4	(3years) 23		(4years) 21		(5years) 29		73		
Elementary School		642	21	93	85	100	89	84	101	552		
Junior High School		495	15	165	161	158				484		
School for Special Needs Education	(Elementary)	18	3	(Lower) 5		(Middle) 5		(Higher) 6		16		
	(Junior High)	18	3	4	3	6				13		
	(Senior High)	24	3	8	8	8				24		
Total		1,287										1,167

# International Students

As of May 1, 2018

Classification	Country / Region Faculties, etc.	China	Taiwan	South Korea	Thailand	Malaysia	Singapore	Indonesia	Philippine	Vietnam	Mongolia	Bangladesh	U.S.A	Canada	France	Hungary	Uzbekistan	New Zealand	Algeria	Ethiopia	Nigeria	Total		
		Undergraduates	Private Regular Students	Humanities	6	1			2															
Humanities and Social Sciences	4				1		2				2	1												10
Medicine	1																							1
Health Sciences	1			1																				2
Science and Technology	7					1	2																	10
Agriculture and Life Science	3						1				3													7
Students funded by the Japanese Government (Ministry of Education, Culture, Sports, Science and Technology) Research Students	Agriculture and Life Science																	1						1
Private Research Students	Humanities and Social Sciences		11																					11
	Education		3																					3
	Science and Technology		1																					1
Private Subject Students and Auditors	Humanities and Social Sciences		15	2	5	3		1		1				5	5	5			3			1		46
	Science and Technology		1	1	4																			6
	Agriculture and Life Science				1																			1
Students funded by the Japanese Government (Ministry of Education, Culture, Sports, Science and Technology) Japanese Studies Scholarship Students	Humanities and Social Sciences				1																		1	
Graduates	Students funded by the Japanese Government (Ministry of Education, Culture, Sports, Science and Technology) Regular Scholarship Students	Medicine															1						1	
		Science and Technology				1			2											1				4
	Private Regular Students	Humanities and Social Sciences	24				1																	25
		Education	6																					6
		Medicine	8																					8
		Health Sciences	3					1	2															6
		Science and Technology	11	1		1	1																	14
		Agriculture and Life Science	9									1												10
		Regional Studies	4																					4
	The United Graduate School of Agricultural Sciences	7								2		2									1		12	
Special Research Students	Science and Technology	1																					1	
Total		126	6	11	7	9	2	4	1	7	2	2	5	5	5	1	1	3	1	1	1	1	200	

NUMBER OF STUDENTS / INTERNATIONAL STUDENTS

## International Academic Exchange (University-wide Agreements)

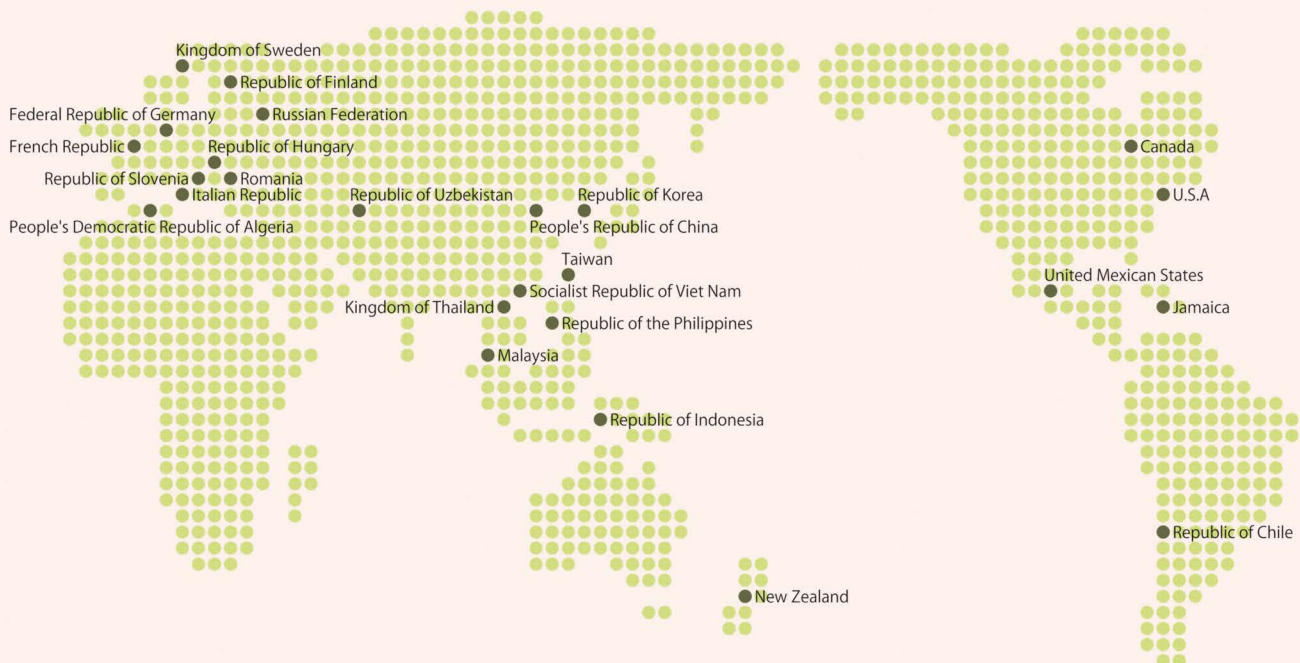
As of May 1, 2018

Country/Region		University	Date of Agreement	Note
North America / South America	U.S.A	University of Tennessee at Martin	July 8, 1980	
		University of Maine	June 26, 1997	
		San Diego State University	March 19, 2001	
		University of Hawai'i Community Colleges	October 30, 2017	
	Canada	University of Saskatchewan	December 7, 2001	
		Mount Royal University	June 1, 2005	
		Thompson Rivers University	October 19, 2006	
Republic of Chile	University of La Frontera	June 25, 2002		
United Mexican States	The Benito Juarez Autonomous University	May 13, 2016		
Europe	French Republic	University Bordeaux Montaigne	January 31, 1994	
	Russian Federation	Far Eastern State Medical University	December 14, 1995	
		M. V. Lomonosov Moscow State University	September 20, 2000	
		Irkutsk State University	March 20, 2002	
	Romania	Hyperion University	September 11, 1988	
	Federal Republic of Germany	University of Trier	May 3, 1999	
	Republic of Hungary	University of Debrecen	December 22, 2000	
Italian Republic	University of Catania	March 27, 2018		
Oceania	New Zealand	University of Otago	September 20, 2000	
		Auckland University of Technology	December 12, 2001	
East Asia	People's Republic of China	Harbin Normal University	August 1, 1995	
		Yanbian University	August 28, 2000	
		Zhengzhou University	October 12, 2000	
		Dalian University of Technology	December 28, 2009	
		Xinjiang Institute of Engineering	September 23, 2016	
		Qingdao Agricultural University	December 26, 2016	
		Taiyuan University of Technology	April 19, 2017	
		Shenyang University of Chemical Technology	November 20, 2017	
	Republic of Korea	Nam Seoul University	June 1, 2001	
		Kyungpook National University	July 11, 2001	
		Pusan National University	December 12, 2001	
		Kyonggi University	September 25, 2002	
	Taiwan	National University of Kaohsiung	November 17, 2016	
		Kainan University	November 18, 2016	
		Mackay Medical College	October 30, 2017	
Southeast Asia	Kingdom of Thailand	National Pingtung University	April 10, 2018	
		Chiang Mai University	November 2, 2000	
		Khon Kaen University	May 6, 2008	
	Malaysia	Thammasat University	April 14, 2017	
		Universiti Tunku Abdul Rahman	April 11, 2017	
Republic of Indonesia	Institut Teknologi Bandung	May 2, 2017		
	National Nuclear Energy Agency	October 3, 2017		
Central Asia	Republic of Uzbekistan	Tashkent State Agrarian University	September 19, 2016	
		Samarkand Agricultural Institute/University	September 22, 2016	
Africa	People's Democratic Republic of Algeria	University of Science and Technology of Oran Mohamed Boudiaf	March 5, 2018	



## International Academic Exchange Agreements (Discipline-specific Agreements) As of May 1, 2018

Country		University	Date of Agreement	Note
North America / South America	U.S.A	University of Tennessee Center for the Health Sciences	May 19, 1982	(School of Medicine)
		University of South Carolina	July 20, 1994	(Faculty of Education)
	Jamaica	The University of the West Indies	February 25, 2002	(School of Medicine)
Europe	Russian Federation	Botanical Garden – Institute Far Eastern Branch Russian Academy of Sciences	February 20, 2015	(Faculty of Agriculture and Life Science)
	Republic of Hungary	University of Pannonia, Faculty of Engineering, Institute of Radiochemistry and Radioecology	March 18, 2013	(Institute of Radiation Emergency Medicine)
	Republic of Slovenia	Faculty of Medicine, University of Ljubljana	November 28, 2014	(School of Medicine)
	Kingdom of Sweden	Centre for Radiation Protection Research, Stockholm University	March 6, 2013	(Graduate School of Health Sciences)
	Republic of Finland	Ruralia Institute, University of Helsinki	September 7, 2009	(Faculty of Humanities and Social Sciences)
East Asia	People's Republic of China	China Medical University	October 25, 2005	(School of Medicine)
		Department of Physics and Electronic Information Science, Hengyang Normal University	November 11, 2014	(Institute of Radiation Emergency Medicine)
		College of Horticulture, ShenYang Agricultural University	November 3, 2015	(Faculty of Agriculture and Life Science)
		National Institute for Radiological Protection, China CDC	May 2, 2016	(Institute of Radiation Emergency Medicine)
		School of Chemical Engineering, Sichuan University	June 8, 2016	(Institute of Regional Innovation)
	Republic of Korea	Korea Institute of Radiological and Medical Sciences (KIRAMS)	January 22, 2013	(Institute of Radiation Emergency Medicine)
		Dongnam Institute of Radiological & Medical Sciences (DIRAMS)	June 14, 2016	(Institute of Radiation Emergency Medicine)
	Taiwan	College of Agriculture and Natural Resources, National Chung Hsing University	November 15, 2017	(Faculty of Agriculture and Life Science)
Southeast Asia	Kingdom of Thailand	Faculty of Engineering, Department of Nuclear Engineering, Chulalongkorn University	November 20, 2013	(Institute of Radiation Emergency Medicine)
		Faculty of Agriculture, Kasetsart University	May 27, 2015	(Faculty of Agriculture and Life Science)
		Faculty of Science, Chulalongkorn University	January 30, 2018	(Institute of Regional Innovation)
	Socialist Republic of Viet Nam	Institute for Nuclear Science and Technology, Vietnam Atomic Energy Institute	November 22, 2013	(Institute of Radiation Emergency Medicine)
	Republic of the Philippines	The Philippine Nuclear Research Institute	January 30, 2015	(Institute of Radiation Emergency Medicine)

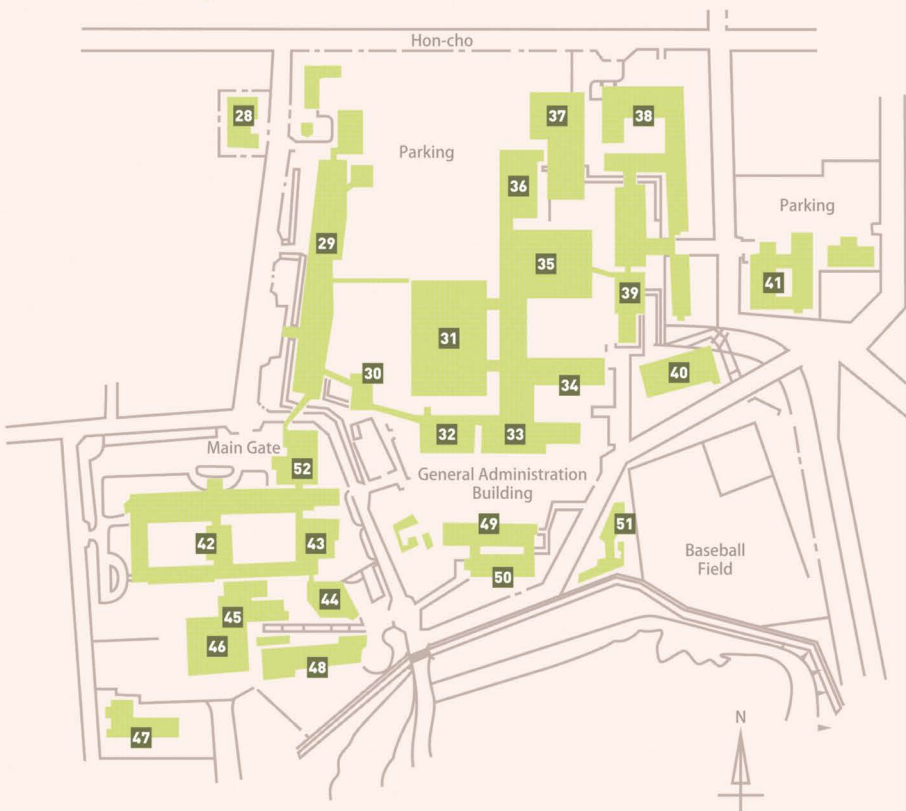


## Bunkyo-cho Campus



- 01** Hirosaki Higher School Foreign Lecturer Residence (Hirodai Cafe)
- 02** Information (Guard Gate)
- 03** Administration Bureau
- 04** Health Administration Center
- 05** 50th Anniversary Auditorium
- 06** General Education Building
- 07** Faculty of Humanities and Social Sciences Building
- 08** University Library
- 09** University Center **10** Commons
- 11** Faculty of Education Building
- 12** University Museum
- 13** Center for Education Research and Practice
- 14** Gymnasium No.1 **15** Kyudo Hall
- 16** Earthquake and Volcano Observatory
- 17** Computing and Networking Center
- 18** Gene Research Center
- 19** 60th Anniversary Auditorium 'Collabo HiroDai'
- 20** Collaboration Center
- 21** Faculty of Science and Technology Building No.1
- 22** Faculty of Science and Technology Building No.2
- 23** Faculty of Agriculture and Life Science Building
- 24** Greenhouse
- 25** Gymnasium No.2 **26** Martial Arts Hall
- 27** Building for Extracurricular Activities

## Hon-cho Campus



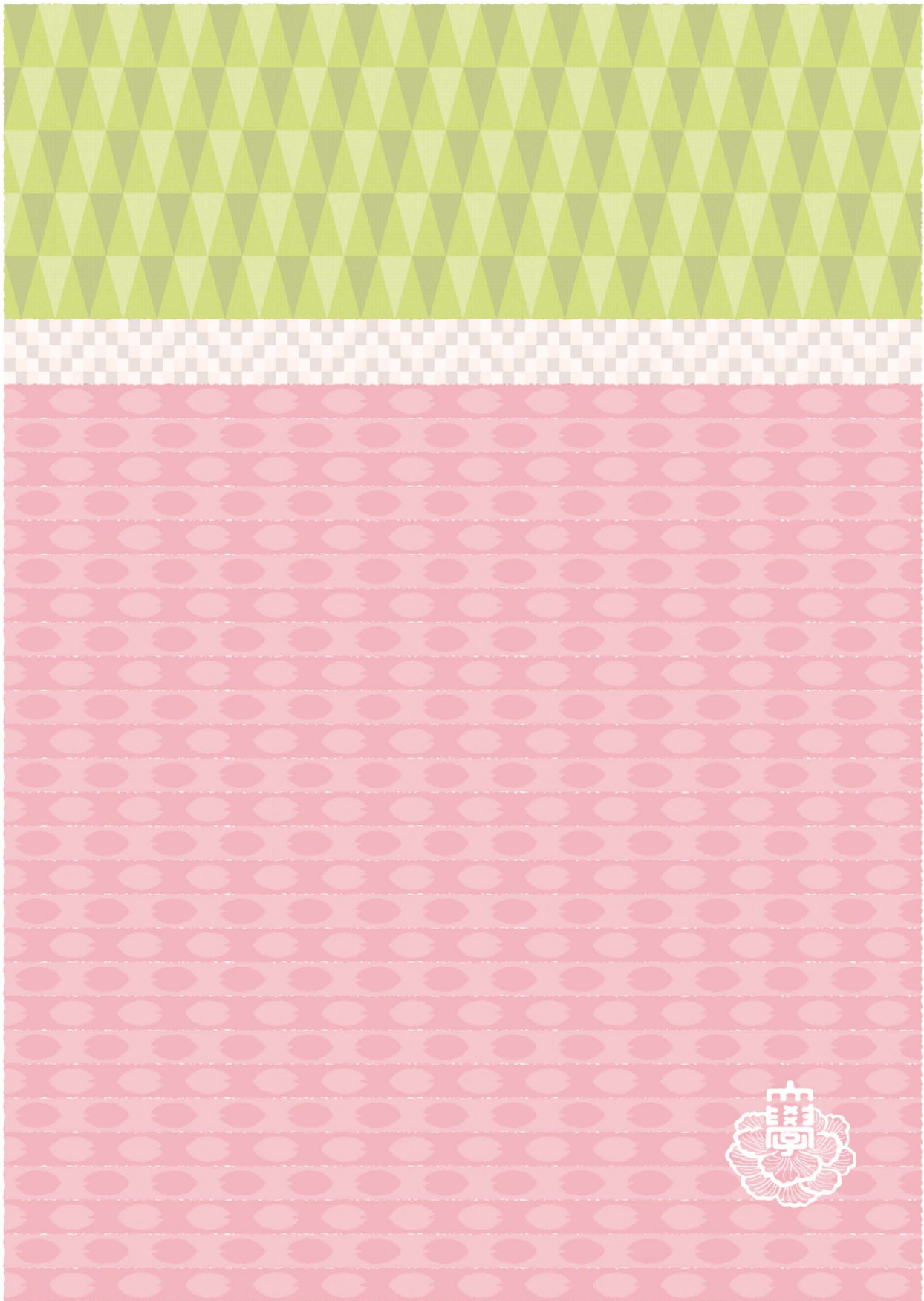
- 28** Medical Communications Center
- 29** Clinical Research Building
- 30** Clinical Lecture Building
- 31** Outpatient Clinic
- 32** Energy Center
- 33** First Ward
- 34** Second Ward
- 35** Central Clonical Service Building
- 36** Advance Emergency and Critical Care Center
- 37** Multi-storey Car Parking
- 38** Graduate School of Health Sciences
- 39** Multidiscipline Medicine Building  
Institute of Radiation Emergency Medicine
- 40** Gymnasium **41** Lodging for Nurses
- 42** Graduate School of Medicine
- 43** Hirosaki University Medical Branch Library
- 44** Foundation Lecture Building
- 45** Radioisotope Laboratory
- 46** Extracurricular Activity Equipment Storage Area
- 47** Shared Use Institution, Hon-cho Campus  
Center for Advanced Medical Research
- 48** Institute of Brain Science
- 49** Student Support Center 1 (Learning Center)
- 50** Hirodai Nursery
- 51** Student Support Center 2 (Student Friendship Center)
- 52** Innovation Center for Health Promotion



Access

Tokyo	Tohoku Shinkansen (3h10m)		Shin Aomori Station		JR Super Express (30m)		100yen Bus (Dotemachi Line) (15m)		University Hospital Mae	
	Airplane (1h20m)		Aomori Airport		Konan Bus (Local Bus) (55m)		*6 Komagoshi Line (15m)		Hon-cho Campus	
Sapporo	JR Super Express (3h30m)		Shin Hakodate Hokuto Station		Hokkaido Shinkansen (1h10m)		Shin Aomori Station		JR Super Express (30m)	
	Airplane (45m)		Aomori Airport		Konan Bus (Local Bus) (55m)		*8 Kinzoku Danchi / Sakuragaoka Line (15m)		Hon-cho	
Morioka	Highway Bus (Yodel) (2h15m)						*3 Koguriyama / Oinomori Line (15m)		Hirosaki Daigaku-Mae or Hirosaki Nougakuseimeikagaku-Mae	
							*3 Gakuen-cho Line (15m)		Bunkyo-cho Campus	
Sendai	Highway Bus (Castle) (4h20m)						*3 Gakuen-cho Line (25m)		Gakuen-cho	
									Gakuen-cho Campus	

\*Chuo Exit Busstop



**National University Corporation Hirosaki University**

1 Bunkyo-cho, Hirosaki, Aomori-ken, 036-8560, Japan URL [www.hirosaki-u.ac.jp/en/](http://www.hirosaki-u.ac.jp/en/)